

RC F







RC F	» P2
EPISODE 6	» P25
COLORS	» P50
FEATURES	» P54
SPECIFICATIONS	» P55









*The instant I hear the roar of the engine,
I'm transported to another world.
I feel the air vibrate on my racing suit,
and something changes inside me like a switch.*







*When I'm totally focused on driving,
I feel sheer delight.
There's no room in my head for anything else.
This moment is why I'm here.*













*Even the air around this car is different.
It radiates the heat of an athlete after competition.
Once again, its aura inspires me.*









*The feeling of exhilaration is palpable.
A different sort of smile spreads across everyone's face.
After all, racing is a sport that gets your blood pumping.*









*The pleasure I get from this car
extends well beyond the road.
The satisfaction that comes from
living with a race-bred coupe is uplifting.*





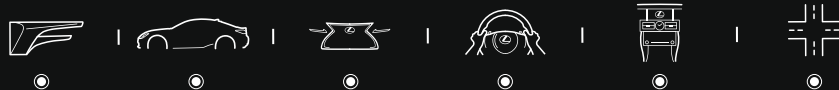


L E X U S

RC F

EPISODE

6



1	F PHILOSOPHY	»» P26
2	RC F CONCEPT	»» P28
3	DESIGN	»» P30
4	PERFORMANCE	»» P36
5	FEATURES	»» P44
6	SAFETY	»» P48

EPISODE

1



F PHILOSOPHY

Lexus F: Race car-inspired engineering delivers pulse-quicken performance, in the most powerful statement of what a Lexus can be.

Engineered from the asphalt up, the RC F is a bold expression of the F philosophy, built for uncompromising performance. The F philosophy was born from a pure passion for driving, the pursuit of exceptional performance with a unique Lexus perspective on extreme driver engagement, to deliver refinement with a razor-sharp edge. "F" takes its name from Fuji Speedway, the birthplace and home test track of the Lexus F high-performance division located near the base of Mt. Fuji. Here, on the Nürburgring, and challenging race tracks around the world, Lexus F tests and refines the limits of sports performance.

The development of all Lexus SPORT F models is based on the Lexus "F" pyramid, with the LFA supercar at its pinnacle embodying the ultimate driving experience; the IS F as the core model incorporating numerous exclusive features that offers fun-to-drive, high-performance; and the urban F SPORT models which inherit the "F" essence with exclusively-tuned suspension and additional refinements, form the base. The RC F evolves the pedigree of the IS F, its race-ready coupe styling integrates advanced motorsport technologies to expand the horizons of what a Lexus and "F" can be.



EPISODE

2



RC F CONCEPT

*The RC F expresses the core of
Lexus F performance and driving pleasure
for everyone who drives it.*

The RC F was conceived as a next generation expression of Lexus "F" values, a race-bred approach to the future of sports driving pleasure. Its creation integrated 3 core attributes: the tuning and technology of the LFA supercar; a deepening of the three elements of "F" driving fun; and an emotional and enthralling driving experience.

The RC F channels the race track-honed technology and fine-tuning developed for the LFA. The naturally aspirated 5.0-liter V8 engine generates pulse-quicken performance, and is given an aural emotional edge by ASC which heightens its sensual appeal as you shift through the gears.

It deepens the core elements of "F" driving fun, defined as 'Response', 'Sound' and 'Limitless Power

Feel', in its riveting race track-ready performance.

The exciting evolution of basic performance harnesses the stirring power of the 5.0-liter V8 engine with the immediate response and intuitive handling of VDIM with Sport Mode, and the immersive feeling of sporting control in the cockpit with its advanced instrumentation and sports seating.

It generates a captivating driving experience that brings an irrepressible smile to every driver's face. The alluring coupe design, at once aggressive and eye-catching, immediately expands the potential for Lexus "F" experience with one strong advantage – it is ready to race, meeting entry regulations for FIA GT3 racing.*

* ASC: Active Sound Control. VDIM: Vehicle Dynamics Integrated Management. FIA: Fédération Internationale de l'Automobile.



EPISODE

3



DESIGN

Pure "F". Aggressive styling fuels anticipation of a dynamic driving experience that is authentic "F" sports performance.



The RC F fuses the eye-catching lines of coupe styling with an aggressive attitude, every form and component honed by the no-compromises functionality of a race-bred sports car. The sensual appeal of the flowing form sublimates this beauty into essential functionality, creating the exceptional cooling efficiency and aerodynamic performance of a high-performance sports coupe.

Face on, this functionality shapes the dynamic double spindle design that integrates cooling ducts in the signature Lexus 'spindle grille' and outer front bumper to channel the flow of air. They are matched by cooling outlets in the center bulge of the hood and integrated into the rear of the front fenders. Together they also contribute

to enhanced stability for dynamic handling.

From the side, the muscular hood silhouette hints at the V8 power within. The continuous flow from the front fender through the beltline highlights the beauty of the coupe styling, and projects forward momentum in a sharp expression of pure "F" performance. Dramatic 19-inch forged aluminum wheels reinforce the low wide stance and powerful sporting presence. The L-shaped cooling outlets in the front fenders and trapezoidal tailpipes evoke the form and spirit of the original IS F, which are further evolved in the "F" aesthetic of the mesh in the 'spindle grille'.







Cocooned in the racing cockpit of the RC F, the “F” sport driving experience comes vividly to life. The driving environment is carefully crafted with the same intense focus on functionality as the exterior, the exclusive seats, steering wheel and meters honed to unify car and driver in advanced sports driving on the race track, together with highly satisfying control on the street.

The sports seats are crafted like an individual piece of high-performance sportswear. An ‘integrated foaming’ structure gives a snug supportive fit while dispersing body pressure, and the carefully calculated stitch pattern provides firm support for the frame and muscles.

Ergonomic studies helped shape the elliptical cross-section and thick grip of the steering wheel to enable fine control on the race track, and inject a feeling of anticipation and exhilaration every time you get behind the wheel. A subtle expression of “F” refinement is seen in the three-color stitching on the steering wheel and shift lever knob, which is complemented by the “F” emblem embedded in the steering wheel and seat headrests.

The meter display highlights the connection between car and driver with a responsive interface that instantly changes with the drive mode selected, prioritizing the display of information to match the driver’s feeling and intent.



EXTERIOR

An uncompromising focus on efficiency strips each component to its core, shaping a dynamic 'functional beauty' that expresses authentic "F" sporting performance.





INTERIOR

In a cockpit honed to fit and function like high-performance sportswear, advanced features and refined control feed a passion for sports driving.



EPISODE

4



PERFORMANCE

On the track and the road, the RC F injects a passion for sports driving and feeling of "F" driving fun every time you get behind the wheel.

True to "F" DNA, the RC F takes performance to a higher level. It evolves the three elements of "F" driving fun, 'Response', 'Sound' and 'Limitless Power Feel', to inject fresh immediacy into a sports driving experience that shines on the race track, and deepens driving pleasure on the road.

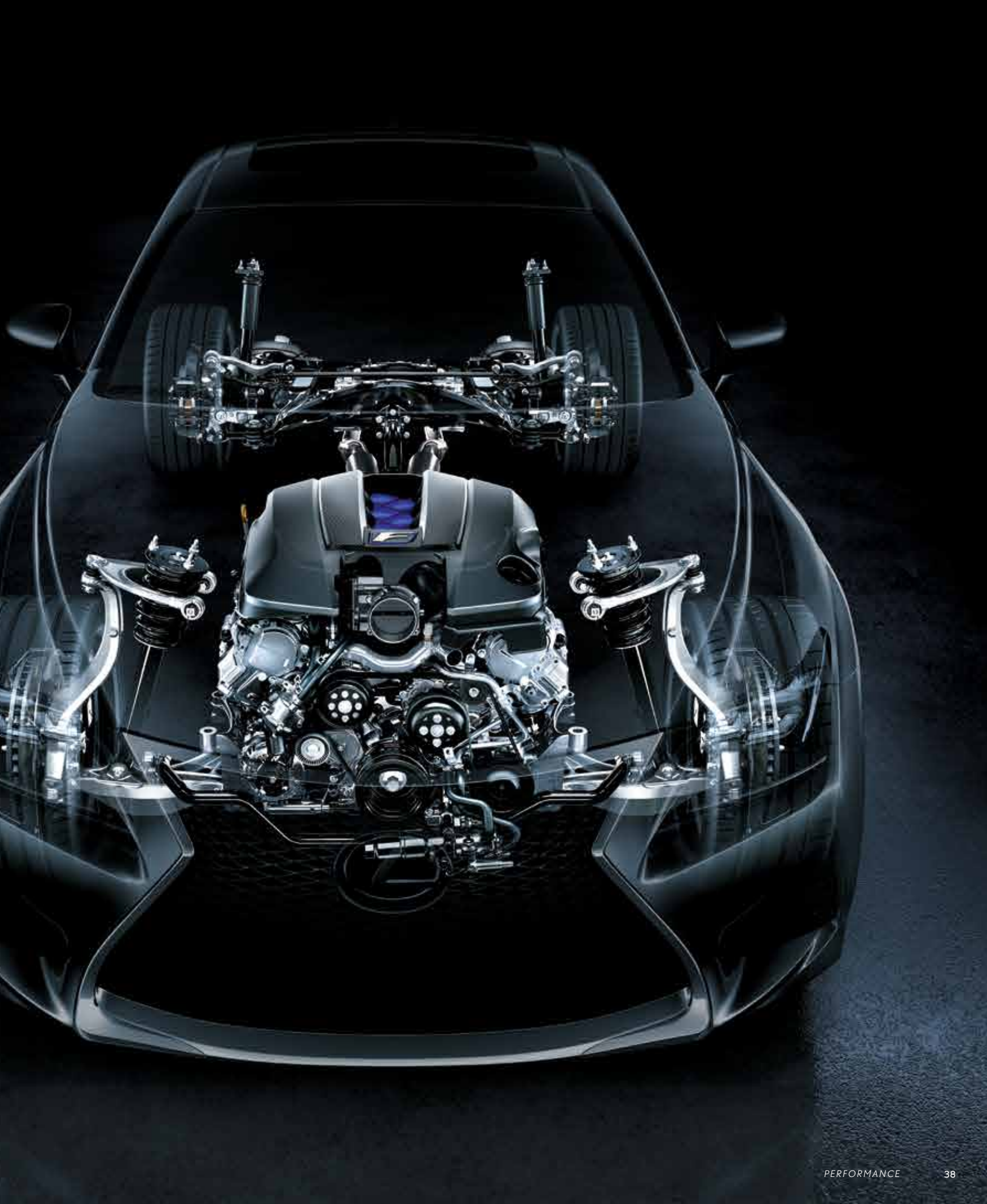
The more firmly you depress the accelerator pedal, the more emphatically the naturally aspirated 5.0-liter V8 engine responds, and its sensual sound instantly feeds a growing feeling of exhilaration and a passion for sports driving.

This stunning power is given emotional expression by sound tuning technology derived from the LFA, to give the driver audible feedback on engine

speed and power from low through to high speeds. The addition of ASC further heightens the sporty engine note.

In the same way, careful attention was paid to enhancing basic performance characteristics that define the response to driver input, including optimizing the suspension and large 19-inch wheels for sports control while cornering, and large front and rear disc brakes for race-strength braking. Driver handling and control are further refined by innovative technologies that include TVD, VDIM with Sport Mode, and the active rear wing.*

* ASC: Active Sound Control. TVD: Torque Vectoring Differential. VDIM: Vehicle Dynamics Integrated Management.



PERFORMANCE



01 / 5.0-liter V8 engine

The 5.0-liter V8 engine generates a dynamic feeling of limitless acceleration for sensational sports car driving, together with the powerful output and excellent response characteristic of a naturally aspirated engine. It integrates advanced VVT-iE for outstanding fuel economy, power and responsiveness.

Though it is race ready, the engine's D-4S and Atkinson Cycle contribute to excellent fuel efficiency.*¹

02 / ASC (Active Sound Control)

In Sport S+ Mode, ASC enhances the fun of the sports driving experience by electronically synthesizing an assist sound to supplement the engine sound based on engine speed, to emphasize engine response to driver input.

03 / Engine and brake cooling

Brake cooling ducts integrated in the 'spindle grille' are sandwiched on both sides by engine oil coolers. Together with the large radiator grille, they help to simultaneously achieve excellent cooling performance and aerodynamic efficiency.

04 / VDIM with Sport Mode

The VDIM advanced vehicle dynamics management technology provides integrated control of the ABS, TRC, VSC, and EPS to help stabilize vehicle behavior in various driving conditions. The system enables selection between four modes to match the driving situation: Normal, Sport, Expert, and TRC & VSC Off. Sport Mode switches the control of VSC and TRC to enhance confident sports driving enjoyment on the race track. Expert Mode gives pro-active slide control to sports drivers by controlling the engine and brakes to help assist spin reduction maneuvers, contributing to aggressive sporty driving with a margin of safety on the race track.*²

05

TVD mode indicators



Information displayed in the tachometer



Torque distribution display (left/right torque split)

Multi-information display

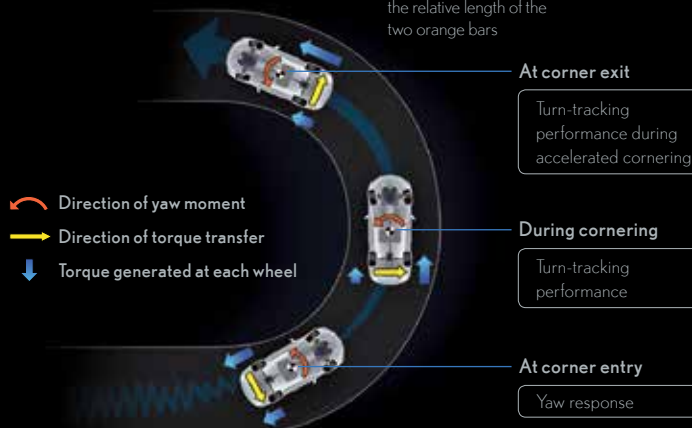


Easy-to-understand display of the left/right torque split based on the relative length of the two orange bars

Information displayed in the tachometer



Easy-to-understand display of the left/right torque split difference



06



07



05 / TVD (Torque Vectoring Differential)

For confidence-inspiring "F" driving, even on the race track, the RC F features an innovative TVD. The system efficiently distributes the appropriate amount of torque between the rear wheels regardless of whether the accelerator is depressed or not, to help control the vehicle's orientation while cornering. TVD has three driving modes to choose from to match the driving situation. 'Standard' realizes a refined balance in vehicle behavior between agility and stability while cornering. 'Slalom' emphasizes steering response, to realize the nimbleness of a small vehicle. 'Track' emphasizes consistent stable behavior during high-speed track driving, for accelerating out of corners with confidence.

06 / Drive mode select

Drive mode select provides integrated control of multiple systems to let you tune performance to suit your driving style. You can select and change between four modes: Normal, Eco, Sport S, and Sport S+ Modes.

07 / 8-Speed SPDS (Sport Direct Shift)

To boost driving pleasure, the advanced 8-Speed SPDS has a dual nature: an 8-speed automatic shifting mode with smooth gear changes for agile driving, and an 8-speed manual shifting mode for all-out sports driving. In D position with Sport S Mode, G AI-SHIFT selects the optimum gear and downshift pattern in response to input from a G force sensor; in Sport S+ Mode the downshifts are even quicker, for dynamic driving on the race track. In M position, it enables gear holding, as well as full lock-up shifting from 2nd through 8th gears.*³

*¹ VVT-iE: Variable Valve Timing-intelligent by Electric motor.
D-4S: Direct-injection 4-stroke Superior-version.

*² VDIM: Vehicle Dynamics Integrated Management.

ABS: Anti-lock Brake System. TRC: Traction Control System.
VSC: Vehicle Stability Control. EPS: Electric Power Steering.

*³ AI: Artificial Intelligence.

PERFORMANCE

01



02



01 / Chassis

The foundation for aggressive "F" sports driving is a lightweight, high-rigidity body structure designed specifically for this race-ready coupe, with large rocker panel cross-sections and strategically positioned braces, including in the floor and engine compartment. The use of innovative production technologies such as laser screw welding, body adhesives, extensive spot welding, and high rigidity glass adhesive, further contributes to the outstanding body rigidity, and excellent handling stability. Together, they realize a fresh level of sports driving performance for Lexus.

02 / Front and rear suspension

To enable dynamic "F" sports driving, especially when running a series of corners on the race track, the double wishbone front suspension and multi-link rear suspension incorporate components designed exclusively for the RC F. Each component was optimized for rigidity and layout, then honed under demanding conditions on race tracks around the world to ensure excellent steering response for exhilarating driving fun, together with outstanding ride comfort.



03 / 19-inch forged aluminum wheels

The RC F is fitted with large 19-inch forged aluminum wheels that are available in a range of beautiful crafted designs. Advanced technologies were used to help minimize their weight while optimizing rigidity.

04 / Disc brakes

To provide the powerful braking performance and high fade resistance required to race on the track, the large ventilated disc brakes feature integrated monoblock aluminum calipers and high-friction brake pads. With 6 opposed pistons on the front and 4 opposed pistons on the rear, the aluminum calipers contribute to both light weight and rigidity. Slots in the discs help keep the brake pads clean, while spiral fins contribute to the excellent cooling performance.

05 / Aerodynamics

Careful attention was devoted to aerodynamics to provide the vehicle stability and cooling performance required for "F" sports driving, and help ensure excellent control, especially at high speeds. Numerous design details shape the airflow, including refining the flat underfloor, and strategically positioning aero stabilizing fins on various parts of the body and underbody. Cooling outlets on the top of the hood and in the rear of the front fenders smooth the airflow towards the back of the vehicle, contributing to excellent handling stability.

06 / Active rear wing

The retractable rear wing integrated in the trunk lid automatically deploys in response to higher vehicle speeds to provide aerodynamic downforce and a dynamic beauty to the RC F's styling. The driver can also manually operate the wing using a switch on the instrument panel.





CFRP (Carbon Fiber Reinforced Plastics) exterior package

'Functional beauty' is given refined expression in the CFRP exterior package, a selection of components made from carbon fiber that pares weight even further, helping to lower the center of gravity to boost sports driving performance. The custom-shaped cooling outlet on the top of the hood enabled by the CFRP also contributes to excellent handling stability. Evolving from the technology developed for the LFA, the weave pattern of the carbon is highlighted by a clear coating,

drawing attention to the beauty of the material while providing excellent weather resistance. Even with the reduced weight, the CFRP exterior package provides rigidity and crash safety performance on a par with the standard materials.

- A** Hood
- B** Roof
- C** Active rear wing
- D** Top surface (Hood, roof & active rear wing)
- E** Underside (Hood & active rear wing)

EPISODE

5



FEATURES

The cockpit blends an intensive focus on supporting active sports driving with the subtle quality of sophisticated Lexus features.

The RC F pursues the essence of “F” driving confidence and comfort, whether timing laps on the race track or cruising on city streets. While the driving position shows an intensive focus on creating a feeling of unity between car and driver, it is balanced by detailed attention to occupant comfort, to provide highly enjoyable driving every time you get behind the wheel.

The sports seats with integrated headrests have a low, rear-set hip point, giving the driver a more linear feel of vehicle movement, and a natural grip on the steering wheel for sports driving. Seat slide adjustments allow individuals to tailor a comfortable driving position. The ‘integrated foaming’ structure of the seats provides a snug fit and support for the

occupants. Together with large knee pads on the sides of the center console and the door trim, they provide excellent support against lateral G forces on the race track.

This attention to refining details extends to the comfort and pleasure of all occupants. Lexus quality ensures outstanding ride comfort, heightened by intuitive control of the audio, navigation and air conditioning systems using the Remote Touch Interface and electrostatic controls. An advanced one-touch walk-in function provides easy access to the independent rear seats which are equipped with convenient features that include shutter-type cupholders, an armrest and trunk-through.



FEATURES



01 / Meters

The "F" driving experience is communicated by the large central color TFT (Thin Film Transistor) tachometer, enclosed in a large-diameter ring machined from aluminum with a stainless steel finish that gives a deep metal luster. The design of the tachometer and the content it displays change with the drive mode selected, enhancing visibility and usability. The position of the information, and the size of fonts and indicators displayed were all fine-tuned to provide quick confirmation of vehicle performance in a glance.

02 / Normal Mode

In Normal Mode, the color TFT tachometer features large speed and shift selection displays in the center. The tachometer occupies 270 degrees of the dial, providing a wide scale that enhances visibility at all rpms.

03 / Eco Mode

The exclusive Eco Mode indicator encourages eco-friendly driving with a dynamic display of eco-driving status. The more aggressive the acceleration is, the less the blue indicator is displayed.

04 / Sport S Mode

As quick shifting is at the heart of sports driving, the larger shift selection display in the center is set above the speed display. A 3-stage rev indicator changes from yellow to orange to red to visually communicate shift timing to the driver.

05 / Sport S+ Mode

The meter switches to a bold simple design suited to race track action, with bar-style tachometer for heightened visibility, and shift selection, speed, water and oil temperature displays arranged in the center. The rev indicator is shown on both sides of the shift selection display.



06 / Remote Touch Interface

Simple touchpad operation lets users interact intuitively with the navigation and audio systems on the 7-inch EMV (Electro Multi-Vision) display, providing easy control of the systems.

07 / One-touch walk-in function

For easy access to the rear seats, the walk-in function automatically slides the front seat forward when the lever in the shoulder of the front seatback is activated. The seat returns to its original position when the seatback is raised.

08 / Rear seats

The independent rear sports seats are shaped to provide excellent ride comfort, with firm hold and fit. Thin front seatbacks contribute to the ample leg room. They also feature shutter-type cupholders, an armrest and trunk-through.

09 / Aluminum pedals

The aluminum pedals highlight the rigorously engineered 'functional beauty' of the RC F. The race car-inspired metal pedals with rubber insets to prevent slipping, give a bold dynamic to the feeling of sporting control.

10 / Knee pads

Large knee pads on the sides of the center console and the door trim were carefully shaped and positioned to provide firm support against lateral G forces during sports driving. The soft material and accent stitching highlight the quality craftsmanship.

11 / Mark Levinson audio system

The Mark Levinson Premium Surround Sound System features a compact amplifier driving 17 speakers and 5.1-channel surround system that produce high fidelity sound. The system uses Signal Doctor playback technology that automatically analyzes compressed music data and appropriately enhances the audio quality to reproduce a rich presence.

EPISODE

6



SAFETY

The peace of mind of advanced active and passive safety measures underpins "F" driving pleasure.

The RC F's race-honed handling and stopping performance characteristics that deliver authentic sports car driving are underpinned by advanced active and passive safety technologies, providing the peace of mind that helps put the fun into a stress-free "F" driving experience on the track, and the road.

Leading-edge measures to actively avoid and prevent accidents aim to assist driving control. They include VDIM with Sport Mode, an advanced vehicle dynamics management technology which provides integrated control of the ABS, TRC, VSC and EPS to help stabilize vehicle behavior in various driving conditions. In addition, LDA, dynamic radar

cruise control, RCTA and the Blind Spot Monitor System use advanced camera and radar technologies to enhance driver awareness of other vehicles in various driving situations.

AL-TPWS provides a warning when it detects low tire pressure.

In the event of an accident, occupant protection is integrated into the core of the RC F, with a high rigidity body structure. Front, side and rear collision compatible structures are designed to help disperse crash energy, and a high-strength body frame to help suppress distortion of the cabin. Inside the cabin, eight SRS airbags help reduce the impact to occupants in a collision.*¹



01



02



03



04



05



06

01 / Blind Spot Monitor System

When the quasi-millimeter-wave radars in the rear bumper detect vehicles in adjacent lanes that aren't visible in the door mirrors, the system activates a warning indicator in the relevant door mirror the moment a vehicle enters this blind spot.

02 / RCTA (Rear Cross Traffic Alert)

To assist safe reversing, RCTA uses quasi-millimeter-wave radars in the rear bumper to detect approaching vehicles in difficult-to-see areas behind the vehicle. When an approaching vehicle is detected, RCTA alerts the driver using a buzzer and indicator in the relevant door mirror.

03 / LDA (Lane Departure Alert)

LDA alerts the driver with a buzzer and on the multi-information display if the system judges the vehicle is about to cross the lane markings without using the turn signals.^{*2}

04 / AHB (Automatic High Beam System)

AHB helps safe driving at night by instantly switching from high to low beam when the lights of an oncoming vehicle, or the tail lights of a vehicle in front, are detected.^{*2}

05 / Pre-crash safety system

When the millimeter-wave radar detects a collision ahead is likely, it alerts the driver and activates pre-crash brake assist when the driver depresses the brake pedal. If it determines a collision is difficult to avoid, the pre-crash brakes and pre-crash seatbelts also operate.

06 / SRS airbags

To help reduce the impact to occupants in a collision, the RC F is equipped with eight SRS airbags; dual-stage SRS airbags, SRS knee airbags and SRS side airbags for the front seats, and SRS curtain shield airbags for the door windows.^{*3}

^{*1} VDIM: Vehicle Dynamics Integrated Management. ABS: Anti-lock Brake System. TRC: Traction Control System. VSC: Vehicle Stability Control. EPS: Electric Power Steering. LDA: Lane Departure Alert. RCTA: Rear Cross Traffic Alert. AL-TPWS: Auto Location-Tire Pressure Warning System. SRS: Supplemental Restraint System.

^{*2} The system may not operate properly depending on the weather, road and vehicle conditions or other factors. Be sure to read the Owner's Manual carefully.

^{*3} The SRS airbags are supplemental devices to be used with the seatbelts. The driver and all passengers in the vehicle must wear their seatbelts properly at all times. Never install a rear-facing CRS (Child Restraint System) on the front passenger's seat. For a forward-facing CRS, it is recommended you use it in the rear seats. Please do not use accessories for the seats which cover the parts where the SRS side airbags should inflate. Such accessories may prevent the SRS side airbags from activating correctly, causing serious injury (Lexus genuine seat covers are specifically designed for models equipped with the SRS side airbags. To find out about availability in your area, please inquire at your local dealer). The photo shows all the SRS airbags activated for display purposes only (the SRS side and curtain shield airbags only inflate on the side of the collision in an actual accident). For details on these and other important safety features, be sure to read the Owner's Manual carefully.

EXTERIOR & INTERIOR
COLORS

The RC F gives fresh expression to its distinguished "F" lineage with a range of distinctive exterior colors and sophisticated interior color schemes worthy of a high-performance sports coupe.



White Nova Glass Flake <083>



Mercury Gray Mica <1H9>



Sonic Silver <1J2>



Black <212>



Graphite Black <223>



Radiant Red Contrast Layering <3T5>



Lava Orange Crystal Shine <4W7>



Heat Blue Contrast Layering <8X1>



19-inch forged aluminum wheels



19-inch forged aluminum wheels
(High, Optional)



19-inch forged aluminum wheels
(High Plus, dark metallic, Optional)



19-inch forged aluminum wheels
(High Plus, polished, Optional)

<SEMI-ANILINE LEATHER>



Flare Red



White

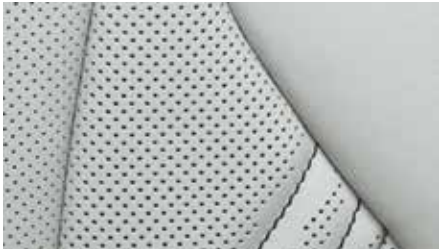


Black

<SEMI-ANILINE LEATHER>



Flare Red

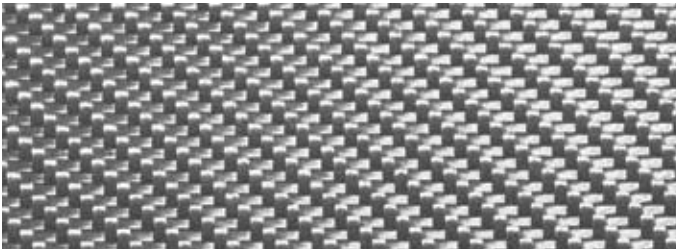


White



Black

<TRIM>



Silver Sterling Fiber



Carbon



Forged Composite Carbon

	INTERIOR COLORS		
	Semi-aniline Leather		
	Flare Red	White	Black
White Nova Glass Flake <083>	●	●	●
Mercury Gray Mica <1H9>	●	●	●
Sonic Silver <1J2>	●	●	●
Black <212>	●	●	●
Graphite Black <223>	●	●	●
Radiant Red Contrast Layering <3T5>	●	●	●
Lava Orange Crystal Shine <4W7>	●	●	●
Heat Blue Contrast Layering <8X1>	●	●	●
	Flare Red	White	Black
Silver Sterling Fiber	●	●	●
Carbon	●	●	●
Forged Composite Carbon	●	●	●

●: Available combination.

MAIN FEATURES <RC F>

EXTERIOR

- Windshield glass; acoustic glass, UV-cut function
- Door, rear and rear quarter window glass; UV-cut function
- Moonroof; power tilt/slide, one-touch mode with jam protection system (Optional)
- Door mirrors; LED side turn signal lamp, auto folding, interlink with reverse gear, wide view
- Door handles; foot area illumination
- Active rear wing
- CFRP (Carbon Fiber Reinforced Plastics) hood, roof and active rear wing (CFRP exterior package)

INTERIOR

- Color TFT (Thin Film Transistor) tachometer
- 4.2-inch color TFT multi-information display
- Analog clock
- Center console box
- Vanity mirrors and lamps (Front seats)
- Cupholders (Front and rear seats)
- Door pockets
- Ambient illumination
- Auto air conditioning system; independent temperature controls for front seats, clean air filter with pollen and odor removal function

OPERATION

- Power tilt and telescopic steering column; auto-away/auto-return function
- Steering wheel control switches
- Multi-mode Automatic Transmission
- Position memory switches (Driver's seat); 3-memory
- Cruise control
- Dynamic radar cruise control (Optional)
- Smart Entry & Start System
- Card Key (Optional)
- Parking Assist Monitor (Optional)
- Lexus parking assist-sensor (Optional)

NAVIGATION AND AUDIO

- Lexus Navigation System (Optional)
- 7-inch EMV (Electro Multi-Vision) display; Remote Touch Interface
- Lexus RC F Premium Sound System; AM/FM radio, in-dash DVD player, 10 speakers, MP3 and WMA (Windows Media Audio) play compatible, DSP (Digital Signal Processor), ASL (Automatic Sound Levelizer)
- Mark Levinson Premium Surround Sound System; AM/FM radio, in-dash DVD player, 17 speakers, MP3 and WMA play compatible, DSP, ASL, Signal Doctor (Optional)
- Bluetooth function; hands-free calling, wireless connection with AV-profile compliant player
- 2 USB ports/mini-jack

SEATS

- 8-way power front seats; one-touch walk-in function
- Power lumbar support (Driver's seat)
- Ventilated Seats (Front seats)
- Rear center armrest; trunk-through

SAFETY

- Pre-crash safety system (Optional)
- Blind Spot Monitor System (Optional)
- RCTA (Rear Cross Traffic Alert) (Optional)
- LDA (Lane Departure Alert) (Optional)
- VDIM (Vehicle Dynamics Integrated Management) with Sport Mode
- TRC (Traction Control System)
- VSC (Vehicle Stability Control)
- ABS (Anti-lock Brake System) with EBD (Electronic Brake force Distribution)
- Brake Assist system
- Hill-start Assist Control
- 3-eye LED headlamps; auto-leveling system
- AHB (Automatic High Beam System) (Optional)
- LED DRL (Daytime Running Lamp)
- Automatic anti-glare mirrors (Interior and door mirrors)
- Dual-stage SRS (Supplemental Restraint System) airbags (Front seats)
- SRS knee airbags (Front seats)
- SRS side airbags (Front seats)
- SRS curtain shield airbags (Door windows)
- WIL (Whiplash Injury Lessening) concept front seats
- 3-point ELR seatbelts (All seats)
- Pretensioners and force limiters (All seats)
- Anchor bars for fixing ISOFIX-compliant child seat (Rear seats)
- CRS (Child Restraint System) top tether anchors (Rear seats)
- Security system; alarm, immobilizer system
- AL-TPWS (Auto Location-Tire Pressure Warning System)

SPECIFICATIONS <RC F>

DIMENSIONS & WEIGHT

Overall length:	4705mm
Overall width:	1845mm
Overall height:	1390mm
Wheelbase:	2730mm
Tread: Front	1555mm
Rear	1560mm
Curb weight:	1800kg
Gross vehicle weight:	2250kg

CHASSIS

Suspension:	Double wishbone type (Front)/ Multi-link type (Rear), coil springs, gas-filled shock absorbers, stabilizer bar
Steering system:	Rack and pinion. EPS (Electric Power Steering)
Brakes: Front	380mm ventilated discs
Rear	345mm ventilated discs
Minimum turning radius (Tires):	5.4m
Fuel tank capacity:	66 liters
Tires: Front	255/35ZR19
Rear	275/35ZR19

ENGINE

Type:	5.0-liter V8 Four Cam 32-valve (2UR-GSE, unleaded)
Piston displacement:	4969cc
Max. output:	471HP/7100rpm (EEC net)
Max. torque:	54.0kg-m/4800-5600rpm (EEC net)
Fuel system:	D-4S (Direct-injection 4-stroke Superior-version)



- Addition of extra features may change figures in this chart.
- Toyota Motor Corporation reserves the right to alter any details of specifications and equipment without notice. Details of specifications and equipment are also subject to change to suit local conditions and requirements. Please inquire at your local dealer for details of any such changes that might be required for your area.
- Note: Vehicles pictured and specifications detailed in this catalog may vary from models and equipment available in your area.
- Vehicle body color might differ slightly from the printed photos in this catalog.

